

<http://www.tingenplace.com>

CASTLE CREEK REALTY
PRESENTS:

145 TOWER DRIVE

LOT # 8



\$159,900

- 1684 SQUARE FEET
- 3 BEDROOMS
- 2 BATHS
- FINISHED BONUS ROOM
- FAMILY ROOM W/ FIREPLACE
- KITCHEN WITH SMOOTH-TOP RANGE, MICROWAVE, BREAKFAST BAR, & PANTRY
- HARDWOODS IN FOYER & KITCHEN
- DOUBLE GARAGE
- MASTER SUITE WITH WALK-IN CLOSET, LUXURY BATH WITH GARDEN TUB/SHOWER, DOUBLE VANITY AND TILE FLOOR.
- COVERED BACK PORCH



Builder will pay up to **\$2,500** in closing costs with use of preferred attorney

The Stone Creek Cottage II is an adorably quaint home with a finished bonus room upstairs. This luxury home features a fireplace in the family room, hardwoods in the kitchen & foyer, and a covered back porch. Your main floor master suite is the perfect place to relax, with a walk-in closet, and luxury bath with garden tub/shower, and double vanity. The well appointed kitchen has a lot of counter space, a breakfast bar, and also features a smooth-top range, built-in microwave, and pantry closet. Come home to the lovely Stone Creek Cottage in Tingen Place!



**Castle Creek
Realty**

CastleCreekRealEstate.com

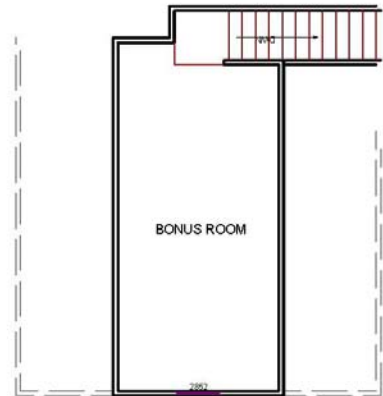
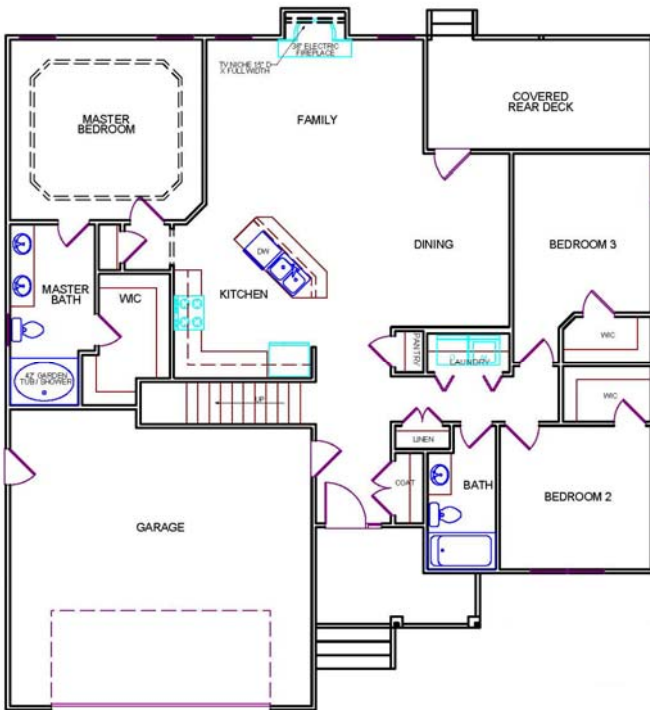
910-242-9030

<http://www.tingenplace.com>

CASTLE CREEK REALTY
PRESENTS:

145 TOWER DRIVE

LOT # 8

The logo for Castle Creek Realty features a stylized grey castle tower with a red flag on top. Below the tower is a blue and green wavy line representing water or a creek. The text 'Castle Creek Realty' is written in a serif font, with 'Realty' in a script font. Below that is the website 'CastleCreekRealEstate.com' in a sans-serif font.

Castle Creek
Realty
CastleCreekRealEstate.com

Call us at
910-242-9030

For more information

**Actual Plan is reversed and images above are for reference only. Call for details!